

View



UF UNIVERSITY of
FLORIDA

College of

Education



Welcome to the UF College of Education

Thank you for taking time to explore the College of Education at the University of Florida. It's impossible to do justice to our innovative programs, distinguished faculty, bright students and beautiful campus in the few pages of text and photos offered here. But we hope to provide a microcosmic view that inspires you to learn more about us by visiting our website (www.education.ufl.edu), talking to our alumni or students, or, best of all, by visiting us.

The task of preparing tomorrow's teachers and education leaders has never been more daunting. Teachers, school counselors and psychologists, principals and school administrators bear a huge responsibility to educate our nation's youth in the midst of complex social conditions and increasing demands upon schools. Now more than ever, a sound education is essential to success in life. At the UF College of Education, we meet these challenges by grounding our curriculum and research programs in the everyday realities of contemporary classroom and community life.

A common thread that links many of our programs is a commitment to the "scholarship of engagement" philosophy, or outreach scholarship that contributes to the public good. We are rolling up our sleeves, partnering with disadvantaged schools and assuming some responsibility and accountability for improving student achievement and teacher quality and retention. At the same time, we are exposing our students to hands-on experiences early on and preparing them for long and rewarding careers in the education discipline of their choice.

In the following pages, we hope we aptly convey our legacy of leadership and vision in addressing the most pressing education needs of the day, for our state, nation and world.

One of America's best colleges

The University of Florida College of Education, founded in 1906 in Gainesville, Fla., consistently ranks in the Top 35 among public education schools of the elite Association of American Universities. Over the past century, Florida's flagship teaching college has produced a steady succession of outstanding educators and scholars in teaching, counseling and administration. Innovative research and initiatives that enhance school improvement, student achievement and leadership development in the numerous education disciplines are hallmarks of the college. UF education faculty have pioneered landmark initiatives such as:

- Head Start
- the community college system
- the middle school movement
- school desegregation
- school counseling programs, and
- Florida's first laboratory school

Today, more than 1,900 education students are enrolled in 45 bachelor's and advanced degree programs, offered within five academic units:

- Counselor Education
- Educational Administration & Policy
- Educational Psychology
- Special Education
- Teaching and Learning

To sustain the college's innovative edge deep into the 21st century, heightened emphasis on emerging technology, advanced graduate studies and interdisciplinary research will effectively prepare tomorrow's leaders in all education professions.



Recent Rankings:

1st among education colleges in Florida

4th among all UF colleges of any discipline at UF

22nd among public education schools of the elite AAU institutions

Top 25-35 consistent ranking among all graduate education schools

Source: U.S. News & World Report's "America's Best Graduate Schools" reference guide



I chose UF because the College of Education has the best program in the country. As a well-trained and prepared professional, I will be one of the hottest commodities in the country once I graduate.

Katura Watson
*ProTeach,
Unified Elementary Education*

A photograph of three graduates in black caps and gowns, smiling and looking upwards against a blue sky with green trees in the background. The graduates are positioned on the left, center, and right of the frame.

Bright Futures Start Here

Become a student in the College of Education and know that when you leave with degree in hand, you'll have the competitive edge as you enter the job market. You gain the upper hand by graduating from Florida's highest ranked college of education and one of the premier education schools in the nation.

Whether you aspire to be a teacher, counselor or school psychologist, principal, college professor or university administrator, you will be well-prepared when you walk into the classroom or office that first day on the job. UF provides students with all the tools to pursue their goals—distinguished faculty, world-class library facilities, extensive hands-on experience, and a vibrant and diverse campus community.

Add the allure of Florida's famous sunshine, tropical breezes and abundant springs and rivers nearby, plus a full calendar of cultural and athletic programs at UF, and it's little wonder that top-caliber students find our college and university to be the perfect balance of premier academics and a fulfilling lifestyle.

Our challenging programs of scholarship and real-world experiences prepare educators to serve not just their school, but also their communities. Choose UF and you're choosing to make a difference. In the classroom, in the world and in your life.



100 Years of Innovation

The Florida Legislature created a Normal School for male teacher education at UF in 1905, out of a need to train and instruct those who would fill the leadership positions of the developing state's public schools. The start of classes a year later set the stage for a long and rich history for the College of Education. Over the past century, as Florida's flagship college of education, we have continued to address the most critical needs of the time in education and society. Here are some of the events that have shaped our rich heritage:



1934 College creates P.K. Yonge Laboratory School, the state's first lab school.

1946 Doctor of education degree offered to meet growing demand for trained public school leaders.

1947 Women are allowed to enroll at UF and the College of Education.

1957-

1967 Education Professor James Wattenbarger guides development of state community college system.

1958 A leader in desegregation in the South and at UF, the College enrolls its first black student.

1966 Three-year effort, led by UF education faculty, culminates with creation of a middle-school system in Florida.

1984 College launches ProTeach, the nation's first five-year teacher preparation program.

1996 The state's Florida Fund for Minority Teachers is created and based at UF to attract promising minority students to teaching.

1997 Counselor Education program ranks No. 1 nationally in its specialty.

1999 New Lastinger Center for Learning connects UF with high-poverty elementary schools across the state.

2000 New UF Alliance program formed to explore solutions to urban education issues in Florida's high schools.

2004 College offers its first online master's degree program for teachers in instruction and curriculum, using latest education technology.



“We are now at a point where we must educate our children in what no one knew yesterday, and prepare our schools for what no one knows yet.”

—
Margaret Mead, anthropologist



Academics

The College of Education offers rigorous scholarship, distinguished faculty, continuous real-world experiences and nationally ranked programs that prepare students to contribute to the transformation of education in today’s rapidly changing world.

Our students truly have the best of both worlds. They thrive in classes small enough to get to know their professors as teachers, mentors and friends. The relaxed and friendly atmosphere brings together classmates from diverse backgrounds who share similar academic and personal interests. At the same time, across the street on UF’s busy main campus, our students have access to the world-class facilities and cultural amenities of one of the nation’s leading research universities.

We have a student body of nearly 800 undergraduate students and 1,100 graduate students, drawn from all corners of the state and world. Education students can choose from more than 45 degree programs, offered in five academic departments. Teacher education is our largest program, followed by counselor education, special education, educational administration and policy, and educational psychology.

Demanding academics shine through in our ProTeach program, which was the nation's first mandatory five-year teacher education program. In graduate studies, we are strengthening programs in critical specialty areas such as teaching and research in high-poverty schools, international education and family-community outreach.

Our push for high-level scholarship is yielding impressive results. Typically each year, 100 percent of our teacher-education graduates pass the state teacher certification exam. In our counselor education program, 99 percent of graduates have passed the national or state counseling certification exam on the first attempt. By demanding high achievement, our graduates can make life-altering changes in their lives and in the schools and communities in which they work and live.



"I was from another country, so I had culture shock and faced academic challenges when I first arrived at UF. These people are nice and patient, providing me with information and assistance. I was able to adjust to the new culture and community and successfully survived my first year—the most difficult time."

Jia Ren

Doctoral student, Higher Education Administration

Programs and Degrees

The College of Education is starting its second century as Florida's flagship teacher preparation program. Teaching, though, is just one of many career paths in education that students can choose from in today's modern college. Our varied degree programs can lead to careers in school counseling, education psychology, school and education administration, teaching or leadership posts in higher education, and marriage or mental health counseling.

The College is organized into five academic units, all offering master's and advanced degrees, along with undergraduate degree programs in teacher preparation and special education:

Counselor Education

A perennial Top 5 selection in the U.S. News & World Report rankings, Counselor Education offers three advanced degree programs—dual-degree master's of education and education specialist (M.Ed. and Ed.S), education specialist (Ed.S.) and doctoral (Ph.D.)—in three areas of concentration: marriage and family therapy, mental health counseling, and school counseling and guidance.

Educational Administration And Policy

Educational Administration and Policy offers master's degrees in educational leadership and in student personnel in higher education. Advanced degrees (Ed.S., Ph.D. and Ed.D) are offered in a combined total of four concentration areas: education leadership, higher education administration, curriculum and instruction leadership, and student personnel in higher education.



Educational Psychology

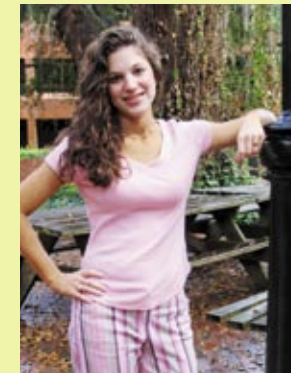
Offers degrees at the master's, specialist and doctoral level in three broad concentration areas: educational psychology, research and evaluation methodology, and school psychology. Undergraduate courses are offered in educational psychology, development, diversity and educational measurement and assessment.

Special Education

Undergraduate students in this nationally ranked program—consistently among the Top 10—participate in the College's unique ProTeach program. They complete their program with a fifth year of study as post-baccalaureate or master's degree students in the Unified Elementary program. A traditional master's degree for non-ProTeach practitioners also is offered. Advanced degrees (Ed.S., Ed.D. or Ph.D.) prepare graduates for teaching, research and administrative positions in colleges, universities and other educational agencies.

Teaching and Learning

School faculty are responsible for ProTeach, the nationally recognized, five-year teacher preparation programs in elementary and secondary education. The school offers bachelor's (B.A.E.), master's (M.A.E., M.Ed.), specialist (Ed.S.) and doctoral (Ph.D., Ed.D) degree programs, including 15 in our acclaimed curriculum and instruction specialty, to prepare exemplary teachers, researchers and teacher educators at all levels.



The ProTeach program has provided me with extraordinarily diverse classroom experience each and every semester. I have volunteered in five elementary schools, each with a different socioeconomic status, which better prepares me for teaching today's assorted population of children.

Rachel Manes
ProTeach, Unified Elementary Education



Graduate Studies

Seeking transformational changes in education, we are stepping up our graduate programs to bolster our research and leadership development efforts. A new Office of Graduate Studies is the focal point, collaborating with graduate coordinators in each academic department to attract and mentor strong graduate students. Office staff members host a variety of seminars and events for graduate students and serve as their liaison with the UF Graduate School.

Our advanced-degree programs attract students from across the nation and around the world, and about 15 percent of our graduate students are African-American or Hispanic. Such diversity in the race, nationality, age and prior work experience of our students yields an insightful exchange of ideas, beliefs and cultural experiences that improves their educational experience and boosts the relevance and impact of our research and scholarship activities in today's global society.

Graduate students are vital cogs in the College of Education's ambitious research agenda and are being groomed as future leaders in education. Our faculty engage doctoral students in opportunities to design curriculum, conduct independent research, present at major conferences and publish in refereed journals throughout their course of study. At the same time, students are helping faculty researchers seek innovative solutions to the most critical education problems of the day. By the time they earn their advanced degrees, new graduates entering or returning to the classroom are well equipped to conduct "action research" as instructors on their way to becoming master teachers. Others may seek professional posts at the college or university level or leadership roles in school counseling or administration.

Anticipated growth in external research funding will generate the need and support for more graduate assistants and spike graduate enrollment collegewide. The College annually awards highly competitive alumni fellowships to newly enrolled doctoral students in all education disciplines, and our capital campaign targets adding more graduate fellowships and scholarships.

The growth of distance learning and online degree programs are making graduate studies more accessible. A new master's/specialist degree program in teacher leadership for school improvement combines online instruction with job-embedded exercises, enabling classroom teachers to earn their degrees on-site in their district while working with master teachers and UF faculty. Another online master's degree in instruction and curriculum emphasizes education technology in teacher practice. Additional graduate online courses are planned in educational administration, counselor education, special education and other disciplines.

The College of Education is committed to providing a superior academic experience so our graduates will have a dramatic impact on the field of education. Students who connect with our graduate programs become valued members of our learning community who can share in the excitement of discovery, self-exploration and advancement in their own lives and in the world of education.



The sheer number of faculty who are leaders in their disciplines yet are willing to guide and support your progress demonstrates their commitment to the core educational process and to leadership development.

Syraj Syed

PhD student, Higher Education Administration

Advanced degrees are not all the same!

The College of Education offers the master of education (M.Ed.) degree as a requirement for entry into professions such as teaching, counseling, administration and school psychology. The master of arts (M.A.E.) degree is designed to provide exposure to research and increase the practical knowledge of those interested in the education field.

We offer advanced degrees—education specialist (Ed.S) and doctoral (Ph.D. and Ed.D.)—in numerous education disciplines, but not all advanced degrees are the same:

- An Ed.S. student would typically be a practicing teacher or allied education professional who wishes to hone his or her skills and gain specialized expertise;
- The Ph.D. degree is research-oriented, typically for students anticipating a faculty career at a research university.
- An Ed.D. student typically plans on working in the field as a practitioner or administrator but wants to develop new professional capabilities.

Which degree is in your future?

This is the College of

Education







Research

Education faculty at the College and its K-12 laboratory school (P.K. Yonge Developmental Research School), together, have recently attracted more than \$7 million yearly in research and training grants. The College's stepped-up research focus is reflected in the recent creation of our Education Research Office, whose staff is reshaping our research-funding infrastructure and aggressively pursuing new external funding opportunities for research and training initiatives.

Generating more opportunities for multi-site, multidisciplinary collaborations is the key to greater success in garnering large grant support. One such program, funded by a Howard Hughes Medical Institute grant, is UF's ambitious Science For Life initiative, a 10-college partnership (including

Our mission aligns with the research-intensive mission of the University of Florida, which is rated as one of the nation's leading research institutions by the Carnegie Commission on Higher Education.



Education) with national and international collaborators working to bolster undergraduate and pre-college experiences in the life sciences.

Education faculty and their graduate students are pursuing vital research that is already making a dramatic impact on improving schools, attracting and retaining highly qualified teachers at high-poverty schools and improving student achievement. Our P.K. Yonge lab school and the Baby Gator Child Development and Research Center, our laboratory pre-school, are important centers for research and development on critical education issues in grades K-12 and early childhood.

College-designated centers tackle some of the most critical education issues, with new research conducted in the areas of school improvement, counseling and substance abuse, personnel preparation in special education, bilingual education, literacy, educational assessment and professional development for novice teachers. Our academic departments also have special research programs addressing vital topics such as public school inclusion of exceptional students, community education, community college leadership and learning-challenged student transition.

Our capital campaign goals reflect our research focus. We have targeted adding more graduate fellowships and scholarships, endowed chairs and named professorships such as our Irving and Rose Fien Professorship in Education and our David Lawrence Jr. Endowed Professorship in Early Childhood Studies. One of the College's most ambitious campaign proposals is the planned expansion of Norman Hall to create an education research and technology annex—to be called the Experiential Learning Complex or ELC—where interdisciplinary research teams from across the campus would adapt the latest information technologies to transform how education has been traditionally defined and delivered.



Research comes to the top of the agenda once you move into the doctoral program. The faculty's active research life becomes visible and contagious. Part of the program is to prepare us to be good researchers and to recognize our responsibility to contribute to the knowledge in our field.

Tina Tannen

Doctoral student, Counselor Education





**“The great aim of education is not
knowledge, but action.”**

**Herbert Spencer,
English philosopher**

Engaged Scholarship

Engaged scholarship is a burgeoning movement among American universities and colleges, and it is the core principle of a transformation the College of Education is implementing in its research, teaching and service programs.

The philosophy broadens the concept of scholarship and academic research to reflect the issues and concerns of society at large. UF education faculty members are involved in an increasing number of outreach activities that contribute to improved schools and student learning, while addressing important social and community issues. Here are just a few examples:

- UF “professors-in-residence” embed themselves in classrooms throughout Florida to help high-poverty schools boost teacher retention and student achievement.
- Professors partner with public school educators to devise ways to include more students with disabilities in regular classrooms.
- A UF professor leads field trips for students to migrant farm worker communities in South Florida to explore how communities can help improve their lifestyle and educational opportunities.
- Education technology researchers develop and evaluate online high school lessons for rural or home-schooled students who otherwise might not have access to such courses.
- UF education faculty with the Center for School Improvement lead workshops across the state, allowing Florida teachers and administrators to collaboratively assess their own teaching practices and share what they have learned about school improvement.
- UF professors participate in site-based professional learning communities focused on improving instructional practices and student achievement.

Engaged scholarship is based on a strong belief in the power of education to make a difference in our world. Through collaborations with school districts, government agencies and community organizations, we can prepare the next generation of scholars, teachers and citizens as change agents for a more just and democratic society.



Affiliates, Centers and Institutes

By partnering with public schools, school districts and communities, UF education faculty are working through several College-designated centers and institutes to meet Florida's varied and fast-changing educational needs:

P.K. Yonge Developmental Research School: Florida's first laboratory school was established by the College in 1934 as a center of innovative educational program development and dissemination for K-12 students. A leader in the Florida Reading Initiative, the PKY faculty provides professional development to more than 70 schools in North Central Florida.

Baby Gator Child Development and Research Center: UF's on-campus daycare center has expanded and strengthened its identity as a pre-school child development and research center for the College of Education and UF.

UF Alliance: A school-improvement partnership between UF and high-poverty, low-performing high schools across Florida, designed to improve educational opportunities for students in urban communities and help schools improve student achievement, leadership and teacher quality.

Center for School Improvement: Cultivates UF partnerships with Florida schools to provide "inquiry-based" professional development as a primary method of school improvement. Through the inquiry process, educators collaboratively assess their own teaching practices and share what they have learned to foster overall school improvement.

Center on Personnel Studies in Special Education (COPSSE): Research by center faculty provides insights into critical special education issues concerning teacher preparation, quality and retention.

Institute of Higher Education: UF resident faculty provide mentoring, networking and continuing professional development opportunities for higher education practitioners and leaders, with special emphasis on Florida community colleges and underrepresented groups.

Lastinger Center for Learning: Mobilizes the expertise and resources of UF's interdisciplinary research community to improve the quality of teaching and learning at high-poverty elementary schools throughout Florida.





Teacher preparation, recruitment and retention

Given the rising demand for teachers nationally, and the need to retain high quality teachers, especially in low income schools, the College of Education is known for developing innovative programs to meet these challenges.

ProTeach

This rigorous program is based on a five-year model. UF students planning on a teaching career invest a fifth year beyond their bachelor's degree to be recommended for Florida Professional Educator certification. The additional year leads to the Master of Education degree. Our faculty integrate their programs with the latest research-proven innovations in instructional approaches and technologies.

ProTeach offers three programs to prepare students for different careers within education:

- **Unified early childhood education** (preschool-grade 3)
- **Unified elementary/special education** (grades K-6) with ESOL endorsement, and exceptional student education
- **Secondary education** (grades 6-12)

The early childhood and the elementary/special education programs are “unified”—with an emphasis on preparing all teachers to teach all children, including those with special needs or from diverse backgrounds. Students in Unified Elementary/Special Education who specialize in special education during the master's year also will be eligible for certification in elementary education and exceptional student education (K-12). Those wishing to teach at the secondary level must complete a bachelor's degree in the subject area they intend to teach before admission into the final year of ProTeach education.

National Accreditation
The college's educator preparation programs are approved by the State of Florida Department of Education and have been continuously accredited by the National Council for the Accreditation of Teacher Education (NCATE) since 1954.

SITE (Site-based Implementation of Teacher Education)

To attract qualified college graduates to elementary classroom teaching, the College created an intensive four-semester program called SITE (Site-based Implementation of Teacher Education). This alternative to traditional teacher preparation provides a learning environment in which the graduate student's previous careers and experiences supplement their classroom instruction. SITE graduates earn a Master of Education Degree (M.Ed.) in curriculum and instruction with an emphasis in elementary education.

Professional Development Communities (PDCs)

ProTeach and SITE both offer extensive fieldwork and classroom experience during the internship, and are linked to the College's new Professional Development Communities (PDC) program. Each year, UF sends more than 325 prospective teachers into partnering schools, where they train alongside mentor teachers committed to unified or "inclusive" education. Hands-on experience at PDC schools also prepares our doctoral students for school-improvement activities and other scholarship and research pursuits.

Professional Development

A key piece of the solution to the epic teacher shortage is helping schools keep the qualified and experienced teachers they already have—especially in many of our lowest-performing schools. Through several of the College's centers and school-improvement programs, UF "professors-in-residence" embed themselves in classrooms to facilitate hands-on professional development and collaborative self-evaluation for practicing teachers. Another UF-led initiative is the Florida Flagship Schools, a network of teachers, principals and school district administrators that allows educators from elementary schools in several Florida communities to exchange ideas and learn the latest research-proven teaching practices.

Certain professional development programs target novice teachers and educators at low-income or inner-city schools, while new online degree programs provide easy access for practicing teachers in any Florida school district, across the nation and even in other countries.



Student Life/Campus

Choose UF and you'll find that our dynamic student-life programs help you grow personally as well as intellectually. With more than 48,000 students, UF has something for everybody, with more than 5,000 academic, cultural and athletic activities offered yearly. Within walking or bike-riding distance on campus are the Reitz Union student activities center and game room, a performing arts center, art and natural history museums and two recreation complexes. There are more than 750 student organizations, including pre-professional groups at the College of Education such as the Student Reading Council, Student Council for Exceptional Children and Minority Student Education Guild. For sports enthusiasts, UF has ranked among the nation's 10 best athletic programs in each of the last 20 years. Florida couples its strong intercollegiate sports program with more than 60 intramural and club sports ranging from archery to weight lifting.

Gainesville and local surroundings

The University is situated in Gainesville, in the heart of North Central Florida. Gainesville retains a "small town charm," yet boasts an array of cultural and recreational activities rivaling most major metropolitan areas. With sun-filled summers and mild winters, you're less than an hour's drive from sparkling rivers and springs for weekend outings of tubing, swimming or boating, and only 90 minutes from either Atlantic or Gulf Coast beaches. Gainesville, with its natural beauty and tree-lined canopies, has been designated as "Tree City, USA" and consistently ranks among the "most livable cities in the USA" by Money Magazine.

Best of both worlds

Whether you crave the buzz of a vibrant campus or the scenic solitude of the nearby wilderness, those who study, work and play at the University of Florida truly know they're living in some place special, at a special time in their lives.





Admissions

Undergraduate Studies

The Undergraduate Admissions application for both prospective freshmen and transfer applicants is available through the University of Florida Office of Admissions online at www.admissions.ufl.edu.

Admission to UF's ProTeach teacher-preparation program at the junior level requires a minimum 1010 SAT or 21 ACT score, passing scores on all sections of CLAST or the General Knowledge Test of the Florida Teacher Certification Examination, completion of the Common Course Prerequisites with a 2.6 cumulative GPA and a 3.0 preprofessional GPA, and completion of all AA general education requirements including Gordon Rule communication and computation requirements.

Graduate Studies

Applicants for graduate studies in the College of Education should contact the department of interest for information about admissions procedures. To be admitted to graduate study in a given department, the prospective student must satisfy the requirements of the department as well as those of the UF Graduate School.

Financial Assistance

The College's Office of Student Services has information about scholarships and loans administered by the College of Education at G416 Norman Hall, or online at www.education.ufl.edu/StudentServices/. Students can obtain other financial aid information from the UF Office for Student Financial Affairs, 103 Criser Hall, 352-392-1275 or 352-392-1210.

Connect with us

College of Education

140 Norman Hall
PO Box 117044
Gainesville, FL 32611-7044
(352) 392-0721

www.education.ufl.edu

Dean: Catherine Emihovich

Produced by:

College of Education News &
Publications

Director and Writer/Art Director:

Larry Lansford, APR

Designer:

Indigo Design, Gainesville, Fla.

Photography:

Ray Carson and Kristen Bartlett,
UF News Photography

Larry Lansford, APR

Mark Trammell

The mission of the College of Education is to prepare exemplary practitioners and scholars; to generate, use and disseminate knowledge about teaching, learning and human development; and to collaborate with others to solve critical educational and human problems in a diverse global community.

Student Services

Graduate Studies: www.education.ufl.edu/gradstudies • 352-392-0726, ext. 267

Undergraduate Student Services: www.education.ufl.edu/studentsservices • 352-392-0721, ext. 267

Recruitment, Retention & Multicultural Affairs: www.education.ufl.edu/RRMA/ • 352-392-5242

Academic Departments

Counselor Education: www.education.ufl.edu/Counselor/ • 352-392-0731

Educational Administration & Policy: www.education.ufl.edu/Leadership/Leadership.html • 352-392-2391

Educational Psychology: www.education.ufl.edu/edpsych • 352-392-0723

Special Education: www.education.ufl.edu/specialeducation • 352-392-0701

Teaching and Learning: www.education.ufl.edu/school/ • 352-392-9191

Administrative

Dean's Office: www.education.ufl.edu/web/dean • 352-392-0728

Development & Alumni Affairs: www.education.ufl.edu/daa/ • 352-392-0728, ext. 290

Education Research: www.education.ufl.edu/research • 352-392-2315, ext. 234

News and Publications: www.education.ufl.edu/newspubs • 352-392-0726, ext. 266

Affiliates, Centers and Institutes

Baby Gator Child Development & Research Center: www.education.ufl.edu/departments/babygator/ • 352-392-2330/392-7900

Center for School Improvement: www.education.ufl.edu/csi • 352-392-0728, ext. 299

Center on Personnel Studies in Special Education: www.education.ufl.edu/copsse/ • 352-392-0701, ext. 280

Institute of Higher Education: www.education.ufl.edu/IHE/ihe.html • 352-392-2391, ext. 263

Lastinger Center for Learning: www.education.ufl.edu/Centers/Lastinger/index.html • 352-392-0726, ext. 222

P.K. Yonge Developmental Research School: www.education.ufl.edu/pky • 352-392-1554

UF Alliance: www.education.ufl.edu/Alliance/ • 352-392-0728, ext. 315

University of Florida

Admissions: www.admissions.ufl.edu • 352-392-1365

Disabled Student Services: www.dso.ufl.edu/drps • 352-392-1261

Graduate Programs: www.rgp.ufl.edu • 352-392-1582

Institute of Black Culture: www.dso.ufl.edu/multicultural/ibc/ibc.html • 352-392-1261

Institute of Hispanic-Latino Cultures: www.dso.ufl.edu/multicultural/lacasita/ • 352-392-1261

Multicultural and Diversity Affairs: www.dso.ufl.edu/multicultural • 352-392-1261

Registrar's Office: www.registrar.ufl.edu • 352-392-1374

Student Financial Affairs: www.ufsa.ufl.edu/SFA • 352-392-1275

University of Florida: www.ufl.edu

University Operator: 352-392-3261



About the University of Florida

Founded in 1853, the University of Florida is the state's oldest, largest and most comprehensive university. With more than 48,000 students, UF is one of the five largest universities in the nation. UF is among the nation's most academically diverse public universities, with 16 colleges and more than 100 research, service and education centers, bureaus and institutes. It is the only university in the state to be a member of the prestigious Association of American Universities (AAU), an organization of North America's 63 preeminent graduate research schools. Florida is ranked among the nation's leading research universities by the Carnegie Commission on Higher Education. The University of Florida Libraries form the largest information resource system in the state, with more than 4 million volumes, 6.7 million microfilms and thousands of full-text electronic journals.

College of
Education



www.education.ufl.edu

UF | UNIVERSITY of
FLORIDA
The Foundation for The Gator Nation