

Spring Faculty Meeting

February 23, 2015



Overview

- National Political & Fiscal Climate
- State Political & Fiscal Climate
- UF Update
- College Update
 - Challenges
 - Perceptions, Myths, & Facts
 - Status & Future



National Political & Fiscal Climate

- Major cuts to higher education
 - AZ, IA, IL, KS, LA, MO, NC, WI
- Teacher prep enrollments declining nationally
- Scrutiny of educator preparation programs
- Battle over federal research funding



State Political & Fiscal Climate

- Reduction in statewide testing reqs
- Emphasis on “educational reform” & “innovative learning systems”
- Likely initiatives: “unique abilities” college program, charter school institute



UF Update

President Kent Fuchs (“Fox”)

- Supporting Norman Hall renovation
- Supporting development activities
- Attending COE recognition dinner
- Visiting college (TBD)



UF Update

SVP & COO Charlie Lane

- Strong advocate for renovation



UF Update

SVP Tom Mitchell

- Supporting COE fund-raising

CEO Anita Zucker

- \$5M gift - largest in hx of college



College Update

Rankings – High & Rising

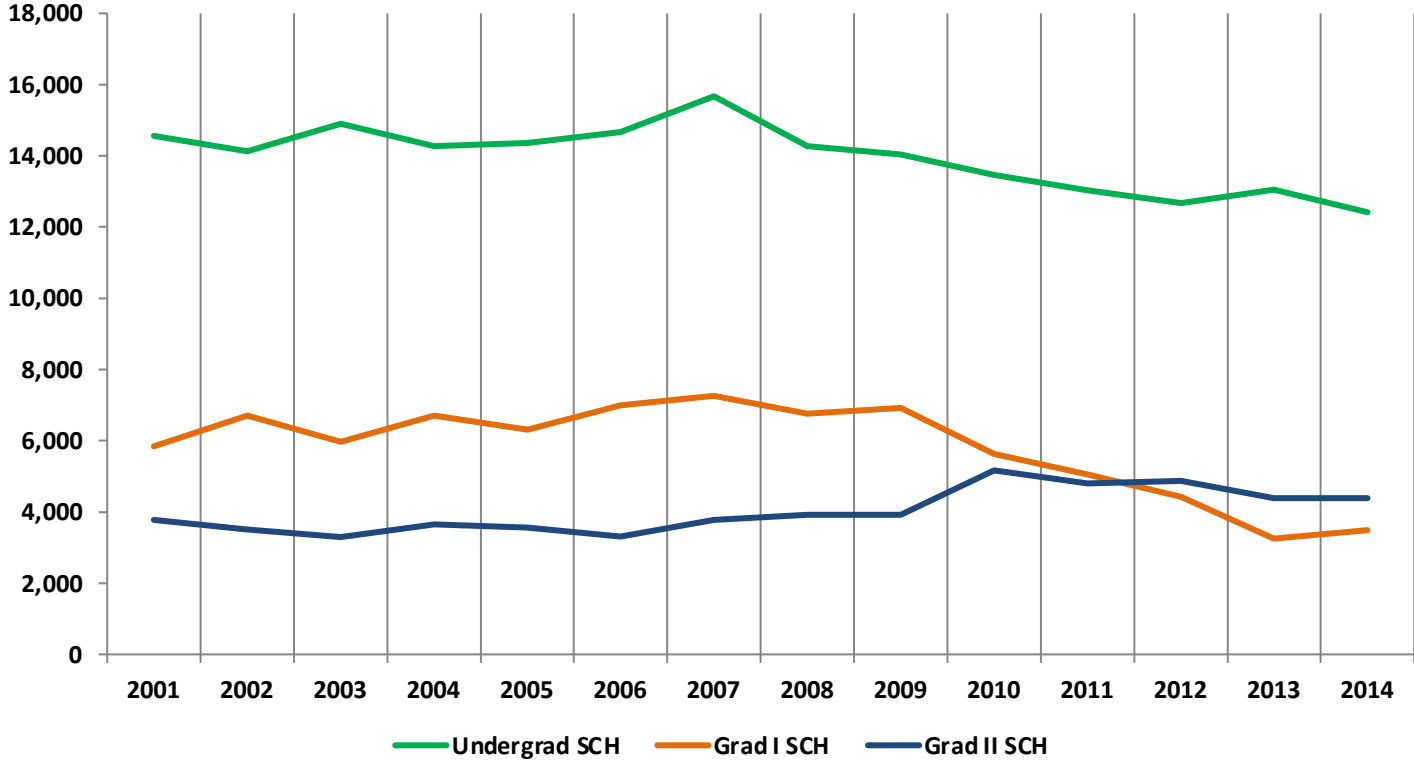
- #21 among public COEs nationwide
- Top 2% among ed programs nationally
- Average 7 spot gain/year past 3 years
- UF's top-ranked graduate college
- Highest ranked COE in FL
- Highest ranked public COE in SE USA



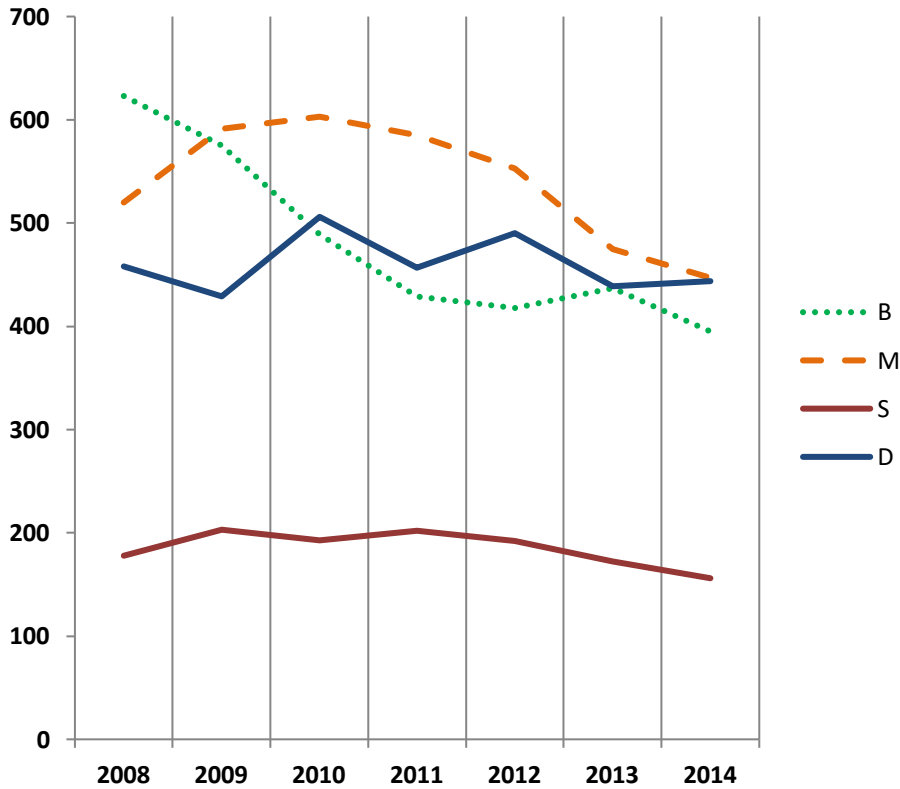
Challenges



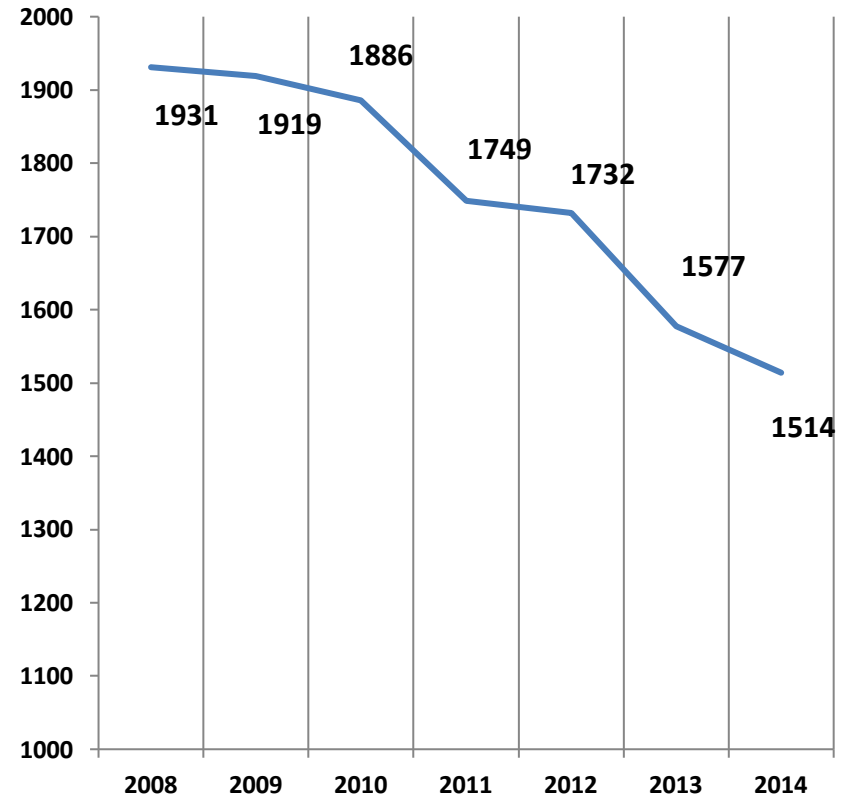
College of Education Fundable SCH by level and year (fall terms only)



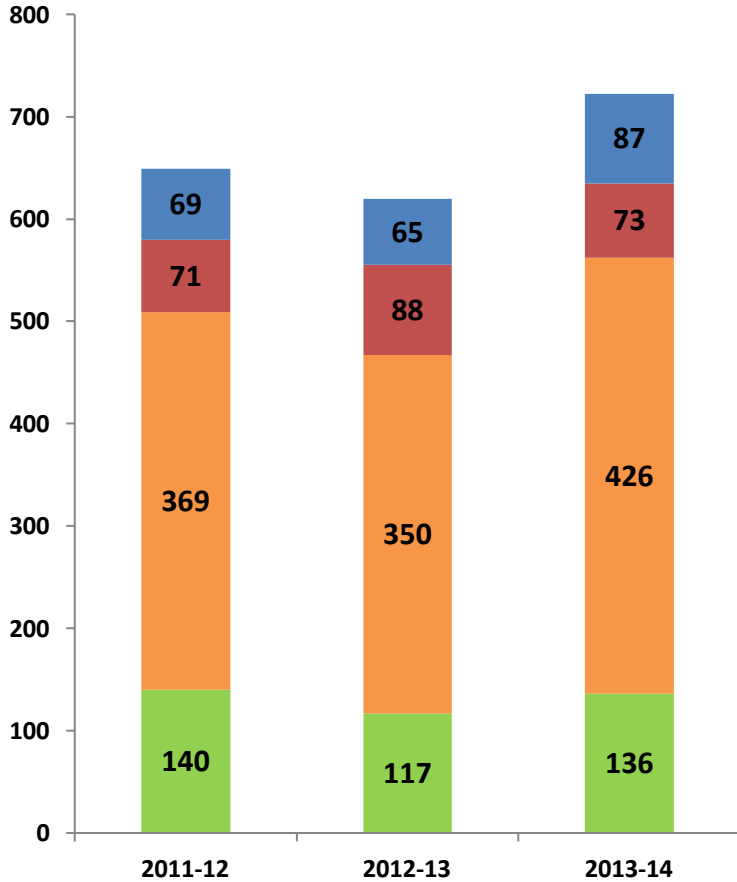
**College of Education
Enrollment by degree level and year
Fall terms only**



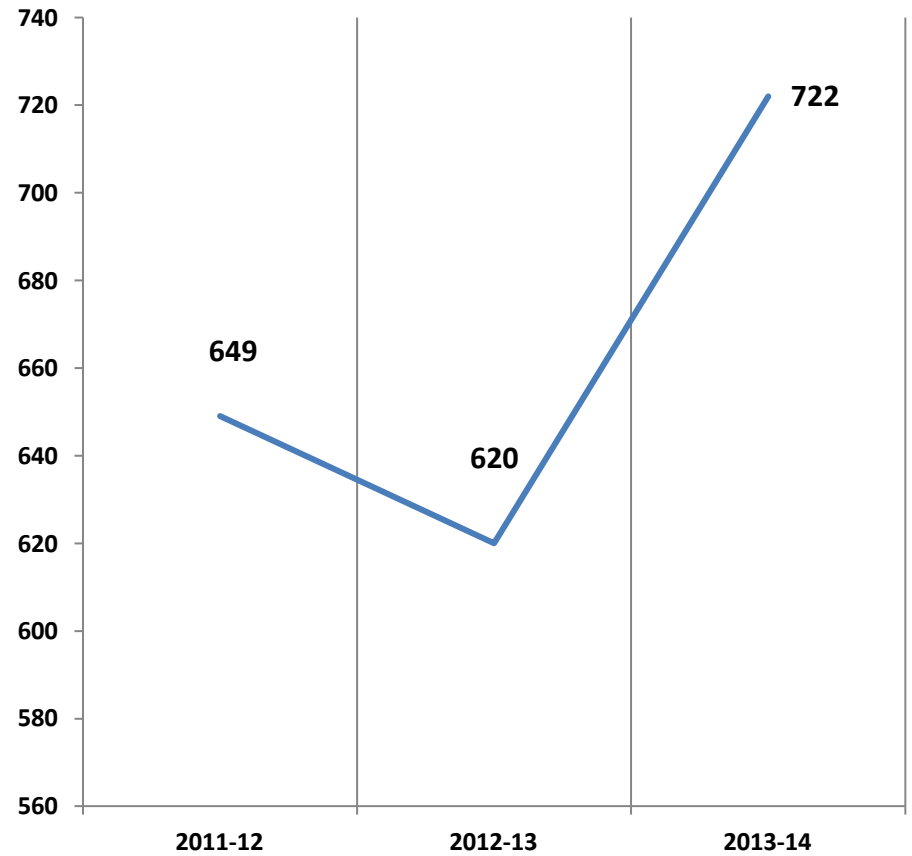
**College of Education
Total Enrollment by year
Fall terms only**



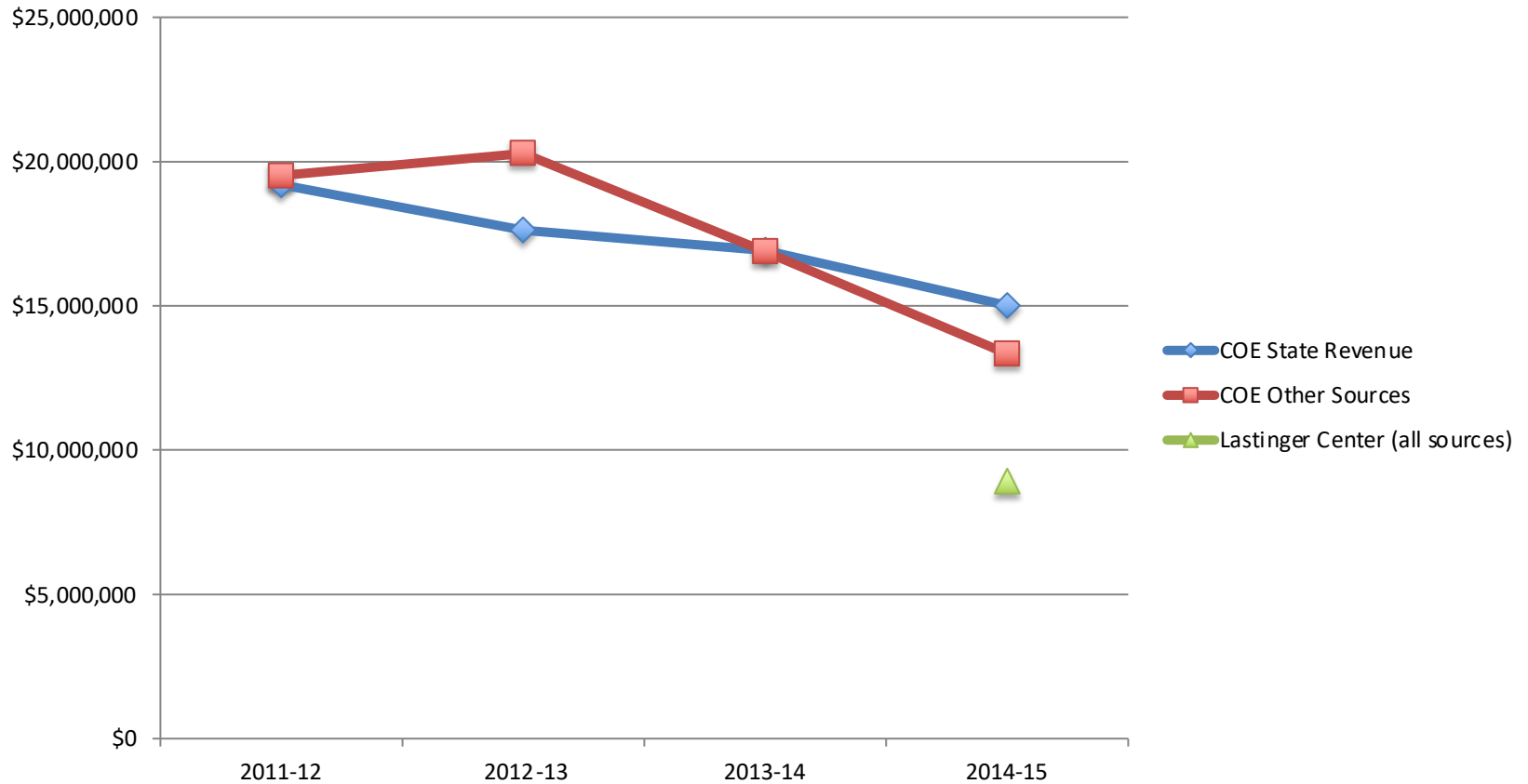
College of Education Degrees awarded by degree level and academic year



College of Education Total degrees awarded by academic year



COE Revenue



Perceptions, Myths & Facts

The Lastinger Center takes college resources.

Myth (mostly).

- COE provides \$200K annually (and supports other COE grant-active centers).
- LC covers its expenses from grants, contracts, gifts, & legislative appropriations (FY 15=\$8.9M)



Perceptions, Myths, & Facts

What has the LC produced?

- Algebra Nation
- Early Learning Florida
- Florida Master Teacher Initiative
- USDOE Investment in Innovation Awards
- STEM Education Model (West Palm Beach)
- Abu Dhabi Professional Development
- Pipeline Projects: Math & Science Nation, Winning Reading, Florida Professional Learning Networks, Advancing Racial Equity



Coming this Fall

- Angela Kohnen, Language & Literacy Ed
 - PhD, U of Missouri–St. Louis
 - Pedagogy for writing in the disciplines
- Aki Murata, Mathematics Education
 - PhD, Northwestern U
 - Lesson study and mathematics teacher PD
- Joni Splett, School Psychology
 - PhD, U of Missouri-Columbia, Post-doc U So Carolina
 - School-based practices for health & mental health outcomes



COE Rising

- Norman Hall back on BOG renovation list
- Grand Challenges course and improvements for Gen Ed revenue
- President, Provost, COO, VP for Research identifying COE for investments
- VP of Foundation viewing college as development priority



COE Rising

- Largest gift in 108 year history of college
- Norman Hall renovation
- Possible expansion in international visibility
- Strong support from UF and state
- Exceptional faculty



Comments & Questions?

Have a Great Spring!!

