

RESEARCH AND EVALUATION METHODOLOGY PROGRAM

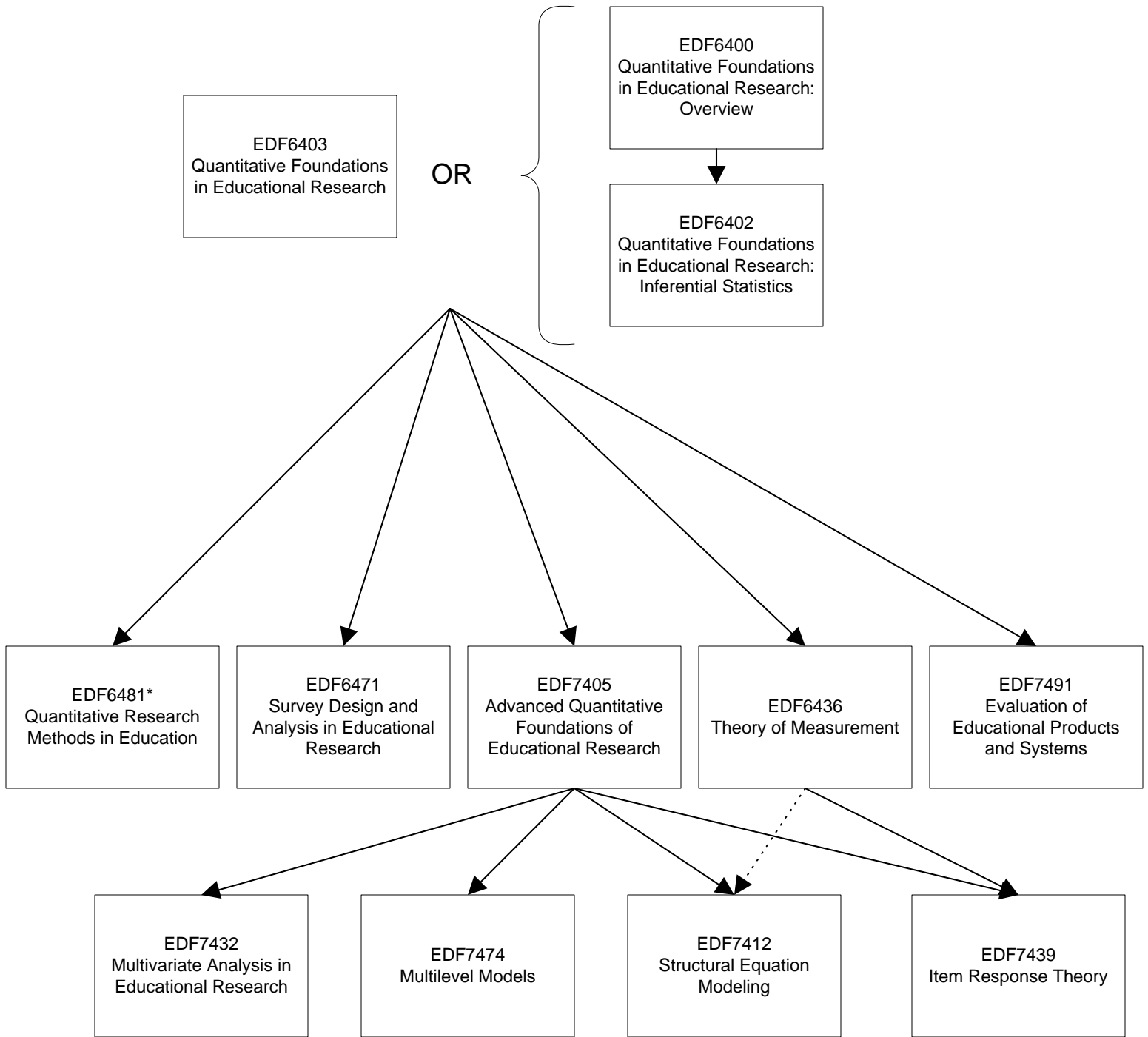
Sequence of Quantitative Classes for non-REM majors

Notes: A full arrow indicates that the class at the beginning of the arrow is a pre-requisite of the class at the end of the arrow.

A dotted arrow indicates a suggested sequence.

Class descriptions can be found at:

http://education.ufl.edu/EdPsych/rem/classes_offered.html



*Note. EDF6481 provides a more advanced treatment of topics covered in EDF6402 and in part of EDF6403, so the sequence EDF6400 + EDF6481 is also possible